

## STANDARD FEATURES

- SilentSonic Technology
- Intuitive Touchscreen Controls
  - Visual Water Level Indicator
  - Auto-Fill
  - On-Board Service Diagnostics
  - Active Alerts
- Flatware saver
- Flushing valve to pump-motor seal
- Remote mounted control box and circuit breaker
- Removable, gasketless water extractor door
- Start/stop switch mounted on extractor
- Total stainless steel construction
- Water level control
- Automated Clean Cycle
- Automatic Drain
- Flanged Feet with Anti-Vibration Dampening

## SONIC 7 PRO

### 7.5 Hp - 30" Advanced Food Waste Reduction System



## OPTIONS & ACCESSORIES

- ☐ Extractor flushing system
- ☐ Spray Reel - 6ft. unmounted (recommended is no other hose present)
- ☐ Automatic shutdown timer
- ☐ Deodorizer injector
- ☐ Remote mounted start-stop station (unmounted)
- ☐ Multiple trough configurations (9" & 12")
- ☐ "The Grabber" trough mounted magnet
- ☐ Remote Extraction System (Contact Factory)

## SPECIFIER STATEMENT

Specified unit will be Bi-line model SONIC 7 PRO waste handling system. Features 7.5 Hp grinding motor with 30" diameter slurry chamber, flatware saver, four stationary blocks with four cutting surfaces each, two tool steel rotating shearing blades, large water extractor chamber with removable gasketless door. Constructed of Type 304 stainless steel.

1 year parts and labor warranty.

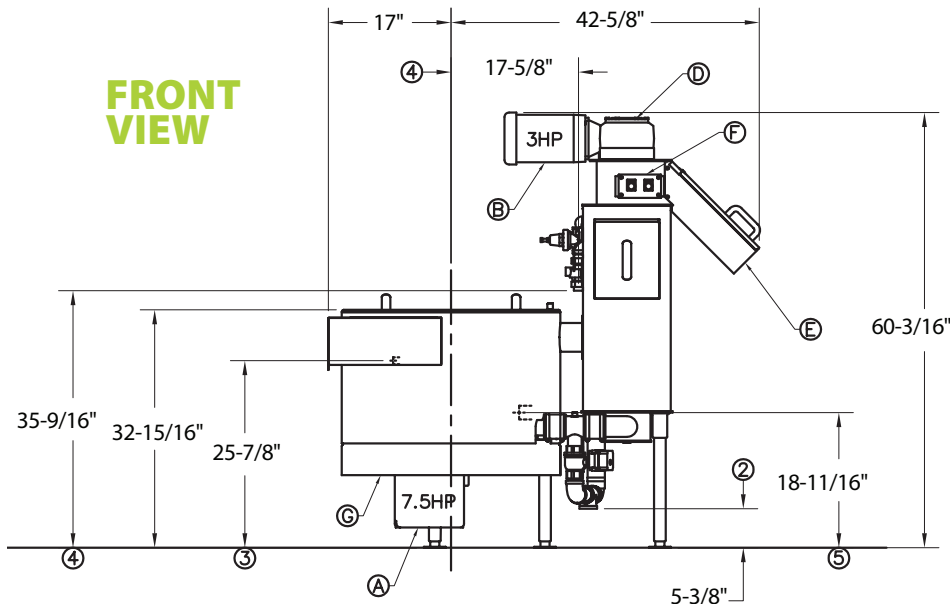
# SONIC 7 PRO

## 7.5 Hp - 30" Advanced Food Waste Reduction System

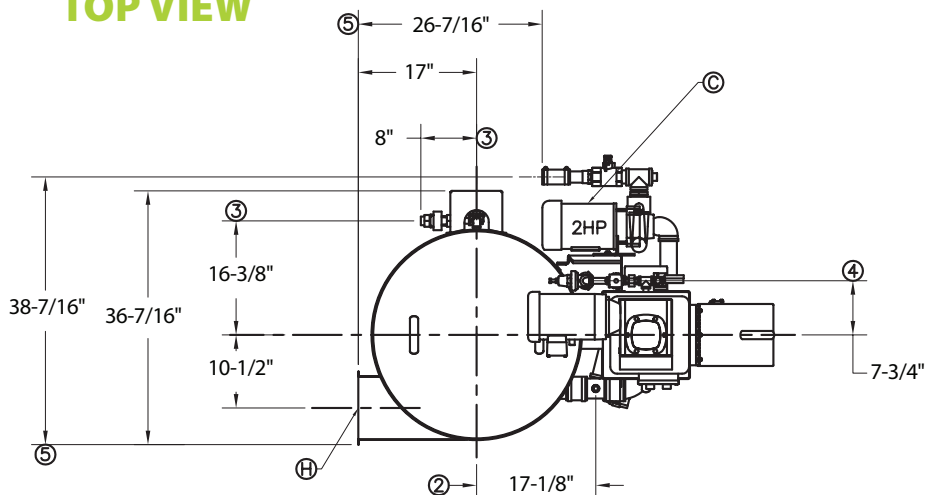
### TROUGH FEED

Volume crated: **99 cu. ft.**  
Shipping weight crated: **1000 lbs.**  
Dimensions shown in inches

### FRONT VIEW



### TOP VIEW



### Utilities

1	<b>Electrical</b>	See Chart page 3
2	<b>Optional Recirculation Pump</b>	
3	<b>Drain</b>	1-1/2" NPT.
4	<b>Cold Water</b>	1/2" NPT cold water connection.

Item	Qty.	Description
A	1	Slurry Chamber 30" dia.
B	1	Motor – Main Drive 7.5 Hp
C	1	Water Extractor Drive Motor 3 Hp
D	1	Water Extractor
E	1	Discharge Chute
F	1	Scrapping Tray
G	1	Start/Stop Station

**Warning:** Plumbing and electrical connections should be made by qualified personnel who will observe all the applicable plumbing, sanitary and safety codes and the National Electrical Codes.

**Note:** Water Hammer Arrestor (meeting ASSE-1010 standard or equivalent) to be supplied (by others) in common water supply line at service connection.

### SPECIFICATIONS

#### Capacities Input

Waste (approx. lbs. per hr.)	1000
Initial Fill Volume	24 U.S. Gal.

#### Water Consumption

Item	gal
Item	gal

#### Motor Horsepower

Pulper	7.5
Water Extractor	3

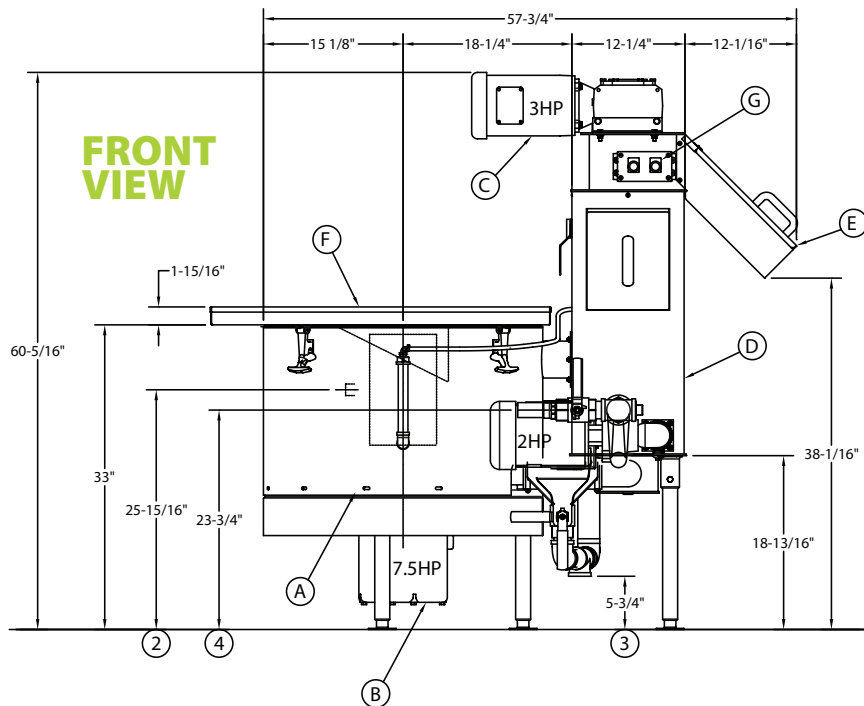
#### Slurry Chamber

Tank (in. dia.)	30
Cutting Disk (in. dia.)	12

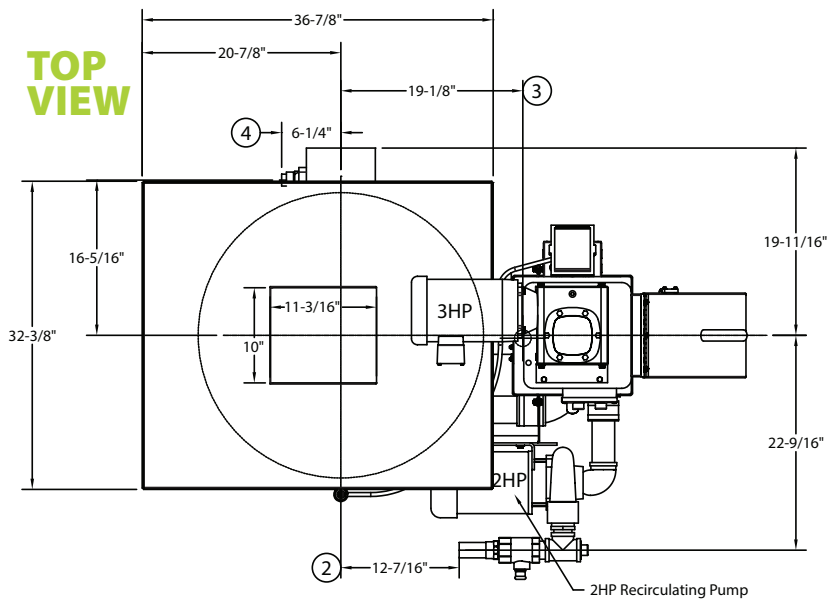
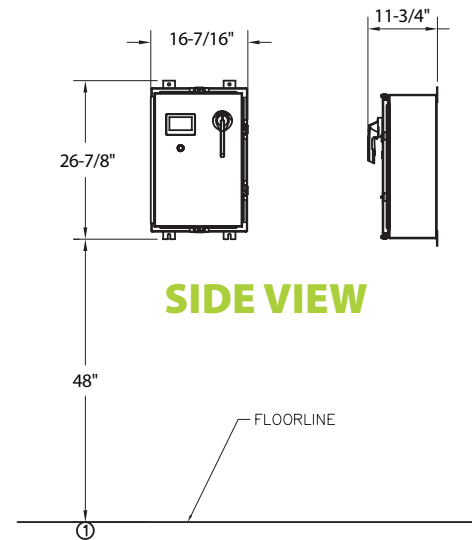
#### Connections

Fresh water (in.)	1/2
Drain (in.)	1-1/2

## TRAY FEED



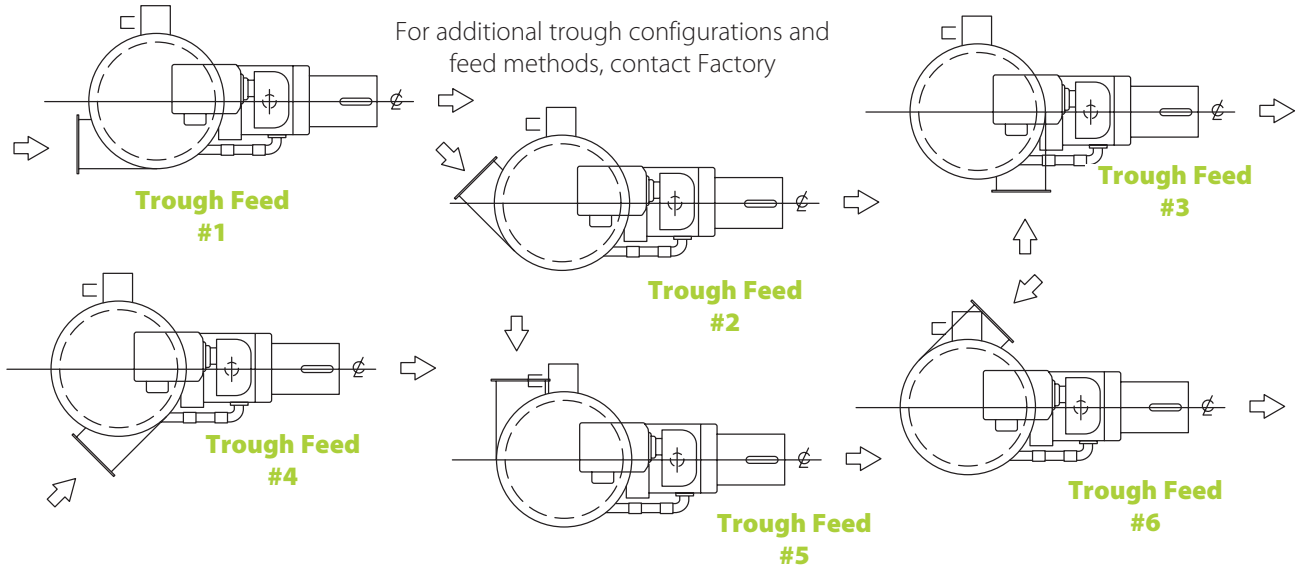
## REMOTE MOUNTED CONTROL CABINET



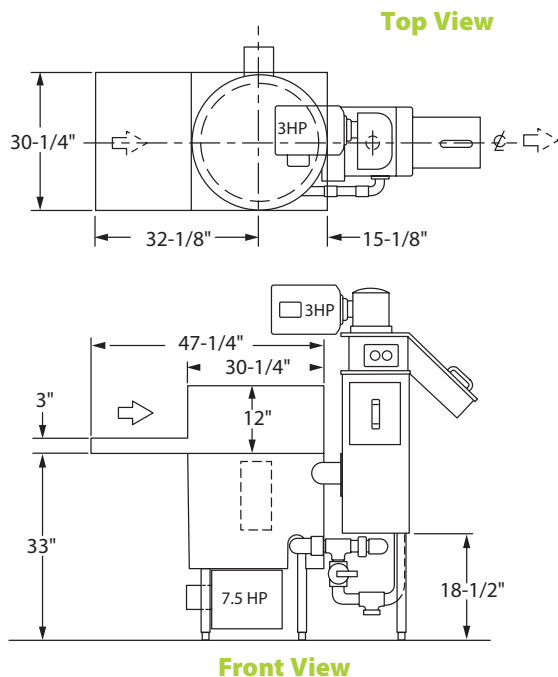
## SONIC 7 PRO

Elec. Specs	Rated Amps	Minimum Supply Ckt. Conductor Ampacity	Maximum Overcurrent Protective Device
208/60/3	40	50	50
230/60/3	36	50	50
460/60/3	18	25	25

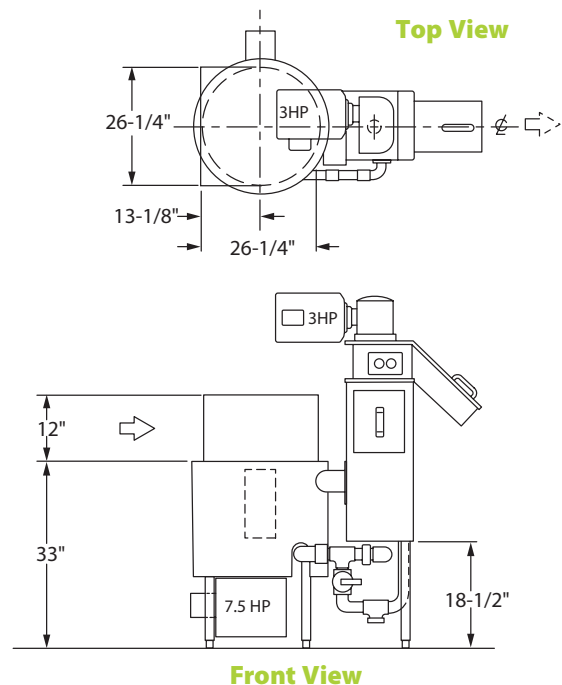
## SAMPLE TROUGH CONFIGURATIONS AND FEED METHODS



**Feed Tray with Hood**



**Under Table Feed Tray**



Due to an ongoing value analysis program at Bi-Line, specifications contained in this catalog are subject to change without notice.